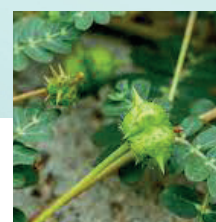
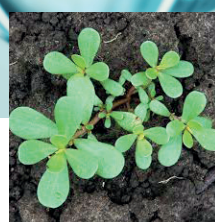
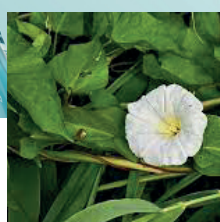
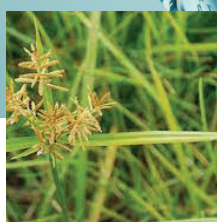
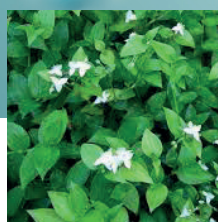


# HARVEST CLETHODIM 120 EC



Reg. No : L 11035 , Act No 36 of 1947

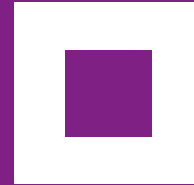


**HARVEST**  
CHEMICALS

25 Dan Pienaar Road, Kloof, 3610 • Tel: +27 (0) 31 764 6315 • [sales@harvestchemicals.co.za](mailto:sales@harvestchemicals.co.za)

**HERBICIDE**

# HARVEST CLETHODIM 120 EC



Reg. No : L 11035 , Act No 36 of 1947

CAUTION / VERSIGTIG

Read the label before use / Lees die etiket voor gebruik.  
KEEP OUT OF REACH OF CHILDREN / HOU BUITE BEREIK VAN KINDERS

HRAC HERBICIDE GROUP	A	HRAC ONKRUIDDODER GROEPKODE
----------------------	---	-----------------------------

Product Info - English	Product Info - Afrikaans
------------------------	--------------------------

**HARVEST CLETHODIM 120 EC** is a selective, emulsifiable systemic weed killer for the post-emergence control of certain grasses in forestry, seedbeds (including volunteer maize containing the glyphosate resistant gene), cabbages, lucerne and leguminose pastures (including medic), onions, sunflowers, stone fruit, pome fruit, citrus, grapes and industrial areas.

**HARVEST CLETHODIM 120 EC** is 'n selektiewe, emulgeerbare sistememiese onkruidodder vir die na-opkom beheer van sekere grasse in bosbou, saadbeddens (insluitend opslagmielies wat die glifosaatbestandheidsgeen bevat), kool, lusern en leguminose weivelde (insluitend medics), uie, sonneblomme, steenvrugte, sitrus, druiwe en nywerheidspersele.



**DANGER**

**Hazard Statements:**

Flammable liquid and vapour  
Maybe fatal if swallowed or enters airways.  
May cause an allergic skin reaction.  
May cause genetic defects.  
May cause cancer.  
May damage the unborn child.

**Precautionary Statements:**

Wash thoroughly after handling.  
Do not eat, drink or smoke when using this product.

**Active ingredient(s) / Aktiewe bestanddeel(e)**

Clethodim (cyclohexanedione) 120g/ℓ .....Kletodim (sikloheksaandioon) 120 g/ℓ

Contents 5ℓ Inhoud

UN No. /Nr. XXXX

Batch No/Lot Nr:  
Expires/Verval:  
Manufactured date/  
Datum van vervaardiging:

**HARVEST**  
CHEMICALS

REGISTRATION HOLDER: HARVEST CROP SOLUTIONS (PTY) LTD  
Co. Reg. No. 2014/187205/07 / Mpy. Reg. No. 2014/187205/07  
25 Dan Pienaar Road, Kloof, 3610  
Tel: +27 (0) 31 764 6315  
sales@harvestchemicals.co.za



**HERBICIDE**

## WARNINGS

- Allow 14 days after last application and harvesting of onions and cabbages.
- For all other crops – allow 28 days after last application and harvesting or feeding of crop.
- Handle with care.
- Flammable liquid and vapour
- Maybe fatal if swallowed or enters airways.
- May cause an allergic skin reaction.
- May cause genetic defects.
- May cause cancer.
- May damage the unborn child.
- Store away from food and feeds, fertilizers and other chemicals.
- Keep out of reach of children, uninformed persons and animals.
- Do not spray over or allow drift to contaminate water or adjacent areas.
- **RE-ENTRY:** Do not enter treated area until spray deposit has dried unless wearing protective clothing.

**Although this remedy has been extensively tested under a large variety of conditions, the registration holder does not warrant that it will be efficacious under all conditions, since the action and effect thereof may be affected by factors such as abnormal soil, climatic and storage conditions, quality of dilution water, compatibility with other substances not indicated on the label and the occurrence of resistance of a pest against the remedy concerned as well as by the method, time and accuracy of application. The registration holder furthermore does not accept responsibility for damage to crops, vegetation, the environment or harm to man or animal or lack of performance of the remedy concerned due to failure of the user to follow the label instructions or to the occurrence of conditions, which could not have been foreseen in terms of the registration. Consult the supplier in the event of any uncertainty.**

## PRECAUTIONS

- Keep away from heat, hot surface, sparks, open flames and other ignition sources. No smoking.
- Keep container tightly closed.
- Ground/bond container and receiving equipment.
- Use explosion-proof [electrical/ventilating/lighting/...] equipment.
- Use only non-sparking tools.
- Take precautionary measures against static discharge.
- Wear protective gloves/protective clothing/eye protection/face protection/hearing protection/...
- Keep out of reach of children.
- Read carefully and follow all instructions.
- Obtain, read and follow all safety instructions before use.
- Wash thoroughly after handling.
- Do not eat, drink or smoke when using this product.
- **IF ON SKIN (or hair):** Take off Immediately all contaminated clothing. Rinse **SKIN** with water [or shower].
- In case of fire: Use Carbon dioxide, dry chemicals, foam or water fog to extinguish.
- **IF IN EYES:** Rinse cautiously with water for several minutes. Remove contact lenses if present and easy to do - continue rinsing.
- IF exposed or concerned: Call a **POISON CENTER** or doctor/ physician.
- If skin irritation or rash occurs: Get medical advice/attention.
- Avoid spray drift onto other crops, grazing, rivers, dams and areas not under treatment.
- Clean applicator thoroughly after use and dispose of wash water where it will not contaminate crops, grazing, rivers or dams.
- Rinse the container three times with a volume of water equal to a minimum of 10% of the container. Add the rinsing to the contents of the spray tank before destroying the empty container by perforation and flattening. Do not use the empty container for any other purpose.
- Prevent contamination of food, feeds, drinking water and eating utensils.

### Relevant substance:

Component	%
Clethodim	10 - 15 %
N-methyl-2-pyrrolidine	1 - 10 %
Solvent naphtha (petroleum), light aromatic	80 - 90 %

## RESISTANCE WARNING:

**For resistance management HARVEST CLETHODIM 120 EC** is a group code A herbicide. Any weed population may contain individual weeds naturally resistant to **HARVEST CLETHODIM 120 EC** and other group code A herbicides. The resistant individuals can eventually dominate the weed population if these herbicides are used repeatedly. These resistant weeds may not be controlled by **HARVEST CLETHODIM 120 EC** or any other group code A herbicides.

### In order to delay herbicide resistance:

- Avoid exclusive and repeated use of herbicides from the same herbicide group code.
- Alternate or tank mix with products from different herbicide group codes.
- Integrate chemical and cultural control methods into weed control programmes.

For more information on resistance management, contact the registration holder.

## DIRECTIONS FOR USE: Use only as directed

### Poisons Helpline: 0861 555 777

Before applying **HARVEST CLETHODIM 120 EC** it is advisable to wait until the majority of the grass weeds are within the optimum stages for control as mentioned in the "Weeds controlled and **HARVEST CLETHODIM 120 EC** dose rates" list. Since **HARVEST CLETHODIM 120 EC** has a limited soil residual action, the weeds to be controlled must have emerged before applying **HARVEST CLETHODIM 120 EC**.

## COMPATIBILITY

Do not mix or apply **HARVEST CLETHODIM 120 EC** with any other additives, pesticides or fertilizers.

## USE RESTRICTIONS

Apply **HARVEST CLETHODIM 120 EC** only on actively growing grass weeds which are within the recommended growth stages as stipulated under "Weeds controlled and **HARVEST CLETHODIM 120 EC** dose rates". Do not apply to plants/weeds that are stressed from whatever cause e.g. moisture or temperature extremes, insect damage, nutrient deficiencies, herbicide carry over or wind damage.

Allow at least 4 days after **HARVEST CLETHODIM 120 EC** application, before applying any other treatment.

Where follow-up crops are to be planted after **HARVEST CLETHODIM 120 EC** applications, apply the following safety periods:

- Broadleaf crops None
- Maize (at 0.375 l/ha - 0,5 l/ha) 7 Days
- Maize (at rates >0.5 l/ha), other grains and grass crops 1 Month

Rain or irrigation within 1 hour after **HARVEST CLETHODIM 120 EC** application may necessitate a second application. Thorough and uniform spray coverage over the entire leaf area of the target plant is necessary for optimum weed control, especially where the crop is very dense. **HARVEST CLETHODIM 120 EC** has been tested on the most important crop varieties which were commercially used at the date of registration. Do not apply **HARVEST CLETHODIM 120 EC** to large areas of newly released cultivars before consulting your local **HARVEST CLETHODIM 120 EC** representative or distributor, or prior phytotoxicity testing.

## MIXING INSTRUCTIONS

Shake the **HARVEST CLETHODIM 120 EC** container thoroughly just before use. Close the container tightly after use. Thoroughly clean the sprayer by flushing the system with water containing detergent before spraying. Half fill the spray tank with clean water and add the required quantity of **HARVEST CLETHODIM 120 EC** as recommended below. Then fill the tank to the required volume with clean water, ensuring thorough agitation. Do not allow the mixture to stand overnight. Thoroughly flush out spraying equipment at the end of the spraying operation.

## GROUND APPLICATION

**HARVEST CLETHODIM 120 EC** can be applied with conventional ground equipment (tractor mounted sprayers, knapsack sprayers) capable of producing a uniform spray distribution. Flat fan nozzles are recommended. Use a low spray pressure (100 – 200 kPa) so that **HARVEST CLETHODIM 120 EC** is applied as a coarse droplet spray. Ensure thorough coverage of the weeds by applying at least 150 l of spray mixture per hectare. Do not spray during severe drought or when the area to be treated is severely waterlogged, thus restricting the growth of the crops and weeds. **HARVEST CLETHODIM 120 EC** controls the grass species as indicated in the "Weeds controlled" table. Other grass species that were not present during the development trials of the product could possibly also be controlled to a certain degree. The registration holder does not accept any responsibility for unlisted weeds.

## APPLICATION RATES

USE	DOSIS RATE/HA	REMARKS
<i>Eucalyptus</i> spp. and <i>Pinus</i> spp.	0,8 - 2,0 ℓ	Apply to actively growing grass weeds. Use the dose rate listed under "Weeds controlled and <b>HARVEST CLETHODIM 120 EC</b> dose rates"
Seedbeds (control of volunteer maize containing the glyphosate resistant gene)	0,5 ℓ	Apply to actively growing volunteer maize plants in the 4 - 8 leaf stage.
Citrus, pome fruit, stone fruit and grapes	0,8 - 3,0 ℓ	Apply as a directed spray to actively growing grass weeds. Use the dose rate listed under "Weeds controlled and <b>HARVEST CLETHODIM 120 EC</b> dose rates".
Onions and sunflowers, cabbages, lucerne and leguminose pastures (including medics)	0,8 - 2,0 ℓ	Apply to actively growing grass weeds. Use the dose rate listed under "Weeds controlled and <b>HARVEST CLETHODIM 120 EC</b> dose rates".
Industrial areas	50 mℓ/5 ℓ water	<b>Spot treatment.</b> Apply to actively growing grass weeds.

## WEEDS CONTROLLED AND HARVEST CLETHODIM 120 EC DOSE RATES

WEEDS SPECIES CONTROLLED AT 0,5 ℓ/HA		GROWTH STAGE
<i>Zae mays</i>	Volunteer maize with glyphosate resistant gene	4 – 8 leaves
WEEDS SPECIES CONTROLLED AT 0,8 ℓ/HA		
<i>Avena sativa</i>	Common oats	3 – 4 leaves
<i>Dactyloctenium aegyptium</i>	Crowfoot	2 – 5 leaves
<i>Digitaria sanguinalis</i>	Crab finger grass	2 – 6 leaves
<i>Echinochloa crus-galli</i>	Barnyard grass	4 – 8 leaves
<i>E. colona</i>	Marsh grass	3 – 6 leaves
<i>Eleusine coracana</i>	Goose grass	3 – 6 leaves
<i>Hordeum vulgare</i>	Barley	3 – 4 leaves
<i>Lolium multiflorum</i>	Italian ryegrass	2 – 5 leaves
<i>Panicum maximum</i>	Common buffalo grass	2 – 8 leaves
<i>Phalaris minor</i>	Little seeded canary grass	2 – 5 leaves
<i>Setaria verticillata</i>	Sticky bristle grass	3 – 6 leaves
<i>Triticum aestivum</i>	Wheat	3 – 5 leaves
<i>Urochloa panicoides</i>	Herringbone grass	4 – 8 leaves
WEEDS SPECIES CONTROLLED AT 1.0 ℓ/HA		
<i>Lolium perenne</i>	Perennial ryegrass	2 – 4 leaves
<i>Setaria pallide-fusca</i>	Red bristle grass	2 – 6 leaves
WEEDS SPECIES CONTROLLED AT 2.0 ℓ/HA		
<i>Cynodon dactylon</i>	Common couch re-growth may occur	4 – 8 leaves

**Note:** For optimal *Cynodon* control thorough pre-spray tillage operations are required to break up the sward, thereby diminishing the underground root mass. Apply **HARVEST CLETHODIM 120 EC** once *Cynodon* re-growth contains approximately 2 – 6 leaves.

### IMPORTANT NOTES

- Poor weed control may result if **HARVEST CLETHODIM 120 EC** is applied when the weeds have been subjected to moisture stress or any other stress. Apply only during moist conditions, when the weeds are actively growing.
- Weeds that have not emerged at the time of application will not be controlled by **HARVEST CLETHODIM 120 EC**.
- Under certain conditions **HARVEST CLETHODIM 120 EC** may cause some crinkling and cupping of emerging *Eucalyptus* leaves. However, this is normally of a transitory nature and growth will not be significantly affected.